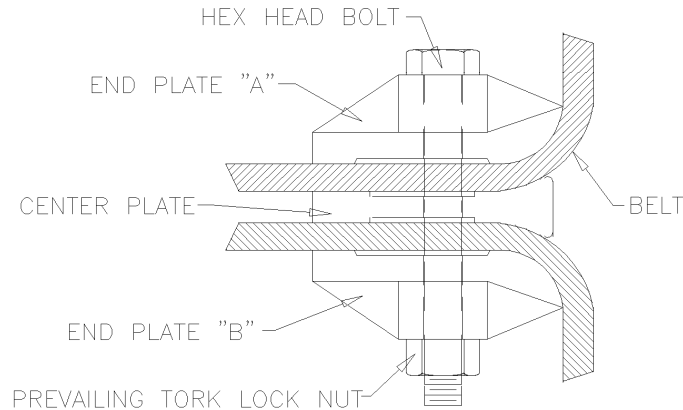


INSTALLATION INSTRUCTIONS

TOPS Swift-Splice (FM) / TOPS Swift-Splice (NFM)



1. Inspect both belt ends to be sure they are square; if not trim.
2. Peel and squarely stick provided splice marking template to end of one belt side. This template will provide you the marking for drilling / punching splice holes.
3. Take both belt ends and clamp them together so they do not shift, then proceed to drill / punch for ½" bolts through both belt ends.
4. Visually inspect for proper hole placement; being sure everything is square.
5. Inspect *TOPS Swift-Splice* and you will notice two gripping areas on both end plates A & B. The slotted end is mounted towards the face of the belt and the end with gripping teeth will be mounted towards the tail of the belt.
6. Place the center plate between both ends of the belt. The wide end faces belt face per drawing above.
7. Once all three plates are aligned use provided hardware and tighten. For 600 PIW belt or less torque to 75 ft.lbs; 600PIW and over use 100 ft.lbs.
8. Visually inspect that everything is correct and install elevator belt.
9. Run elevator for 30 minutes then re-torque to above specifications.

WARNING: Not Approved for Manlifts!

T.O.P.S. Inc. strictly prohibits the use of the *TOPS Swift-Splice (FM)*, *TOPS Swift-Splice (NFM)* and *TOPS Bar-It (NFM)* on manlifts as these splices have not been approved or tested for this application. By installing death or serious injury may occur.

WARNING: The *TOPS Swift-Splice (FM)*, *TOPS Swift-Splice (NFM)* and *TOPS Bar-It (NFM)* are not recommended for use in elevators with wing pulleys. By using them in this application you may notice premature wear on the back side of the belt around splice and / or noise in the boot section as the pulley may contact the splice.

WARNING: Do not re-use hardware. Please contact T.O.P.S. Inc. for replacement parts.

WARNING: Not for use on steel cable belts!

Therm-O Plastic Suppliers, Inc.

Phone: 636-326-4700 • Toll-free: 1-877-326-4704 • Fax: 314-395-8671
website: www.topsinc.us • e-mail: tops@topsinc.us

