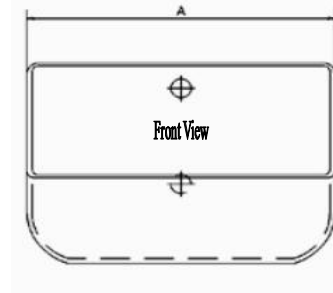
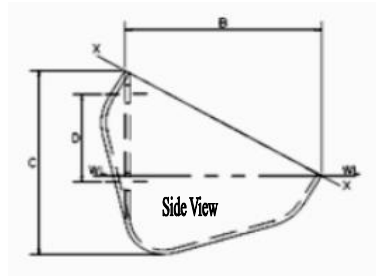


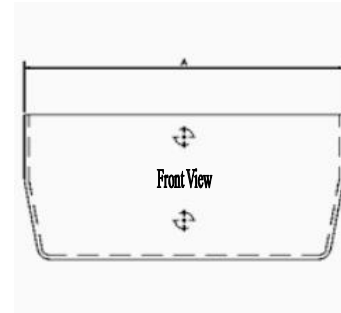
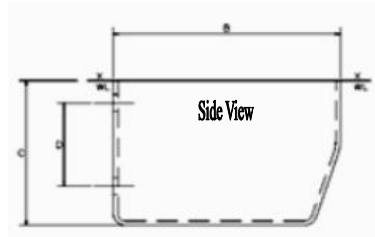
GSA Style Fabricated Industrial Service Elevator Buckets



GSA Style Pressed Seamless Carbon Steel Elevator Buckets

BUCKET SIZE (Nominal) Inches	T.O.P.S. Part Number	DIMENSIONS <small>A, B & C Dimensions are +/- 1/4"</small>				PUNCHING PATTERN				CAPACITY <small>(Net capacity should be used for engineering)</small>				SPACING (Inches) Standard Belt Spacing	PACKAGING		BUCKET WEIGHT (Average) Pounds
		Actual				Hole Centers D	Number of Holes	Distance Down D	Bolt Diameter	Gross X-X		Net			Carton Quantity Avg.	Carton Weight Avg.	
		Length A	Projection B	Depth C	Bucket Thickness					Cu. In.	Cu. Ft.	Cu. In.	Cu. Ft.				
2x2	BPSC202	2-3/4	2-1/4	2	18ga.	15/16	2	1/4	3/16	6.8	0.003	5.0	0.002	6	24	7.3	0.20

GSB Style Fabricated Industrial Service Elevator Buckets



GSB Style Pressed Seamless Carbon Steel Elevator Buckets

BUCKET SIZE (Nominal) Inches	T.O.P.S. Part Number	DIMENSIONS <small>A, B & C Dimensions are +/- 1/4"</small>				PUNCHING PATTERN				CAPACITY <small>(Net capacity should be used for engineering)</small>				SPACING (Inches) Standard Belt Spacing	PACKAGING		BUCKET WEIGHT (Average) Pounds
		Actual				Hole Centers D	Number of Holes	Distance Down D	Bolt Diameter	Gross X-X		Net			Carton Quantity Avg.	Carton Weight Avg.	
		Length A	Projection B	Depth C	Bucket Thickness					Cu. In.	Cu. Ft.	Cu. In.	Cu. Ft.				
3x2	BPSC203	3-1/4	2-1/4	1-5/8	18ga.	15/16	2	1/4	3/16	10.1	0.006	7.6	0.005	7	24	8.5	0.25

Need a distributor in your area? Please contact T.O.P.S. Inc. at 877-326-4704!!

