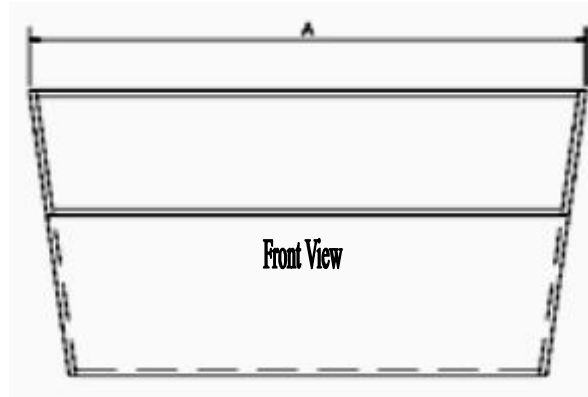
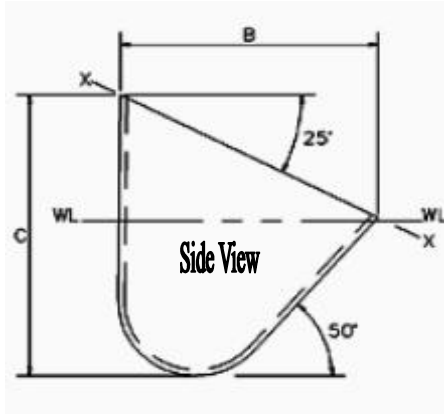


A Style Fabricated Industrial Service Elevator Buckets



A Style Fabricated Elevator Buckets

BUCKET SIZE (Nominal) Inches	T.O.P.S. Part Number	DIMENSIONS			WEIGHT (lbs.)				CAPACITY				SPACING
		A, B & C Dimensions are +/- 1/4"			(Estimated)				(Net capacity should be used for engineering)				(Inches)
		Actual			Carbon Steel				Gross		Net		Standard Belt Spacing
		Length A	Projection B	Depth C	12 ga.	10 ga.	3/16"	1/4"	Cu. In.	Cu. Ft.	Cu. In.	Cu. Ft.	
4x2-3/4	BAF0204T	4	2-3/4	3	1.09	1.41	1.85		15.6	0.009	11.7	0.007	6
4x3	BAF0304T	4-1/2	3-3/8	3-1/2	1.24	1.60	2.13		24.5	0.014	18.4	0.011	7
5x3-1/2	BAF0305T	5	3-1/2	3-3/4	1.72	2.21	2.99		30.5	0.018	22.8	0.013	7
6x4	BAF0406T	6-1/8	4-1/8	4-1/2	2.23	2.87	3.76	5.01	51.0	0.029	38.2	0.022	8
7x4-1/2	BAF0407T	7-1/8	4-1/2	4-3/4	3.01	3.86	5.08	6.76	76.7	0.044	57.5	0.033	8
7x5	BAF0507T	7-1/8	5-1/4	5-1/2	3.45	4.43	5.87	7.81	95.4	0.055	71.6	0.041	9
8x5	BAF0508T	8-1/8	5-1/4	5-1/2	3.94	5.06	6.71	8.92	112.5	0.065	84.4	0.049	9
9x5	BAF0509T	9-1/8	5-1/4	5-1/2	4.44	5.70	7.54	10.03	128.9	0.075	96.7	0.056	9
11x5	BAF0511T	11-1/8	5-1/4	5-1/2	5.42	6.93	9.22	12.26	158.7	0.092	119.0	0.069	9
12x5	BAF0512T	12-1/8	5-1/4	5-1/2	5.92	7.59	10.06	13.39	174.6	0.101	131.0	0.076	9
15x5	BAF0515T	15-1/8	5-1/4	5-1/2	8.34	9.50	12.58	16.73	214.2	0.124	160.7	0.093	9
19x5	BAF0519T	19-1/8	5-1/4	5-1/2	9.37	12.03	15.93	21.19	286.3	0.166	214.7	0.124	9
9x6	BAF0609T	9-1/8	6-1/4	6-1/2	4.89	6.30	8.37	11.13	174.7	0.101	131.0	0.076	10
10x6	BAF0610T	10-1/8	6-1/4	6-1/2	5.44	7.00	9.30	12.37	206.8	0.120	155.1	0.090	10
11x6	BAF0611T	11-1/8	6-1/4	6-1/2	5.85	7.53	9.99	13.21	223.4	0.129	167.5	0.097	10
12x6	BAF0612T	12-1/8	6-1/4	6-1/2	6.27	8.07	10.73	14.27	245.0	0.142	183.7	0.106	10
12x7	BAF0712T	12-5/8	7-3/8	7-1/2	7.70	9.90	13.23	17.60	353.1	0.204	264.8	0.153	11
14x7	BAF0714T	14-5/8	7-3/8	7-1/2		11.13	14.92	19.84	408.9	0.237	306.7	0.177	11
15x7	BAF0715T	15-5/8	7-3/8	7-1/2		11.75	15.75	20.95	443.2	0.257	332.4	0.192	11
16x7	BAF0716T	16-5/8	7-3/8	7-1/2		12.38	16.60	22.08	470.5	0.272	352.9	0.204	11
14x8	BAF0814T	14-5/8	8-3/8	8-1/2		13.21	17.71	23.56	521.6	0.302	391.2	0.226	12
16x8	BAF0816T	16-5/8	8-3/8	8-1/2		14.64	19.64	26.12	602.7	0.349	452.0	0.262	12
18x8	BAF0818T	18-5/8	8-3/8	8-1/2		16.07	21.57	28.68	683.2	0.395	512.4	0.297	12
20x8	BAF0820T	20-5/8	8-3/8	8-1/2		17.50	23.50	31.26	754.9	0.437	566.2	0.328	12
24x8	BAF0824T	24-5/8	8-3/8	8-1/2		20.36	27.37	36.40	903.7	0.523	677.8	0.392	12
18x10	BAF1018T	18-3/4	10-3/8	10-1/2		20.41	27.44	36.49	1025.5	0.593	769.1	0.445	14
24x10	BAF1024T	24-3/4	10-3/8	10-1/2		27.21	36.58	48.65	1367.3	0.791	1025.5	0.593	14
24x13	BAF1324T	24-3/4	13-3/8	13-1/2		47.21	62.94	83.91	1900.6	1.100	1425.5	0.825	17

Need a distributor in your area? Please contact T.O.P.S. Inc. at 877-326-4704!!



2641 Metro Blvd. Maryland Heights, MO 63043
(Phone) 636-326-4700 (Fax) 314-395-8671 (Online) www.topsinc.us