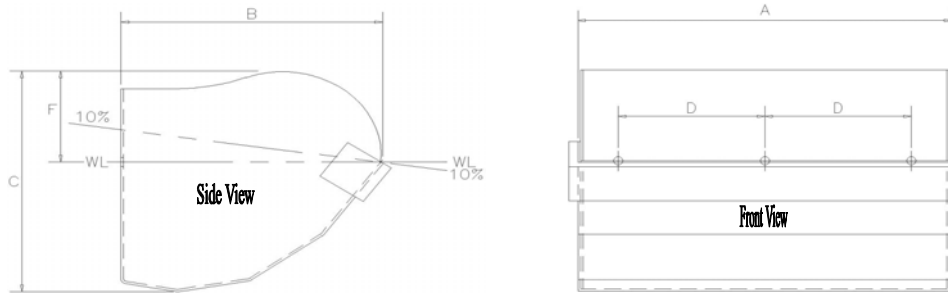


# CC Style "Universal" Digger Fabricated Agricultural Service Elevator Buckets



## CC Style "Universal" Digger Fabricated Elevator Buckets

BUCKET SIZE (Nominal) Inches	T.O.P.S. Part Number	DIMENSIONS A, B & C Dimensions are +/- 1/4"					PUNCHING PATTERN (Holes will be drilled 1/16" oversize)				SPACING (Inches)				PACKAGING		BUCKET WEIGHT (Average) Pounds <small>-carbon steel</small>	
		Length A	Projection B	Depth C	Backwall Carbon	Backwall Stainless	Hole Centers D	Number of Holes	Distance Down F	Bolt Diameter	Water Level + 10%		Water Level (WL)		Standard Belt Spacing	Carton Quantity Avg.		Carton Weight Avg.
											Cu. In.	Cu. Ft.	Cu. In.	Cu. Ft.				
3x2	BCDU0203	3-3/8	2-5/8	2-1/16	12ga	14ga	1-3/4"	2	1/4	7.6	0.004	6.9	0.004	3	5	9.10	1.52	
4x3	BCDU0304	4-1/2	3-5/8	3-1/16	12ga	14ga	2-1/4"; 2-1/2"	2	1/4	18.5	0.011	16.8	0.010	4	5	14.95	2.69	
5x4	BCDU0305	5-3/4	4-3/4	4-1/16	12ga	14ga	3-3/16"	2	1/4	43.8	0.025	39.8	0.023	5	5	18.35	3.37	
6x4	BCDU0406	6-3/4	4-3/4	4-1/16	12ga	14ga	4-3/8"	2	1/4	52.2	0.030	47.5	0.027	5	5	21.70	4.04	
7x4	BCDU0407	7-3/4	4-3/4	4-1/16	12ga	14ga	2-5/8"; 2-11/16"	2	1/4	58.9	0.034	53.6	0.031	5	5	25.10	4.72	
6x5	BCDU0506	6-3/4	5-7/8	5-1/16	10ga	14ga	4-3/8"	2	1/4	79.2	0.046	72.0	0.042	6	5	27.30	5.16	
7x5	BCDU0507	7-3/4	5-7/8	5-1/16	10ga	14ga	2-5/8"; 2-11/16"	3	1/4	91.8	0.053	83.5	0.048	6	5	31.60	6.02	
8x5	BCDU0508	8-3/4	5-7/8	5-1/16	10ga	14ga	3-1/16"	3	1/4	105.3	0.061	95.7	0.055	6	5	35.90	6.88	
9x5	BCDU0509	9-3/4	5-7/8	5-1/16	10ga	14ga	3-1/4"; 3-1/2"; 3-5/8"	3	1/4	117.9	0.068	107.2	0.062	6	5	40.20	7.74	
10x5	BCDU0510	10-3/4	5-7/8	5-1/16	10ga	14ga	4"; 4-1/8"	3	1/4	130.5	0.076	118.7	0.069	6	5	44.50	8.60	
11x5	BCDU0511	11-3/4	5-7/8	5-1/16	10ga	14ga	3"; 3-1/8"	4	1/4	143.2	0.083	130.1	0.075	6	5	48.80	9.46	
12x5	BCDU0512	12-3/4	5-7/8	5-1/16	10ga	14ga	3-3/8"	4	1/4	155.8	0.090	141.6	0.082	6	5	53.10	10.32	
8x6	BCDU0608	8-13/16	6-7/8	6-1/16	10ga	14ga	3-1/16"	3	1/4	149.9	0.087	136.3	0.079	7	5	43.90	8.48	
9x6	BCDU0609	9-13/16	6-7/8	6-1/16	10ga	14ga	3-1/2"; 3-5/8"	3	1/4	170.1	0.098	154.6	0.089	7	5	49.20	9.54	
10x6	BCDU0610	10-13/16	6-7/8	6-1/16	10ga	14ga	4"; 4-1/8"	3	1/4	186.9	0.108	169.9	0.098	7	5	54.50	10.60	
11x6	BCDU0611	11-13/16	6-7/8	6-1/16	10ga	14ga	3"	4	1/4	205.5	0.119	186.8	0.108	7	5	59.80	11.66	
12x6	BCDU0612	12-13/16	6-7/8	6-1/16	10ga	14ga	3-3/8"	4	1/4	224.8	0.130	204.4	0.118	7	5	65.10	12.72	
13x6	BCDU0613	13-13/16	6-7/8	6-1/16	10ga	14ga	3-5/8"	4	1/4	243.4	0.141	221.2	0.128	7	5	70.40	13.78	
14x6	BCDU0614	14-1/4	6-7/8	5-7/8	10ga	14ga	3"	5	1/4	262.7	0.152	238.9	0.138	7	5	75.70	14.84	
10x7	BCDU0710	10-13/16	8-1/8	7-1/16	10ga	14ga	4"; 4-1/8"	3	5/16	254.3	0.147	231.2	0.134	8	4	47.26	11.44	
11x7	BCDU0711	11-13/16	8-1/8	7-1/16	10ga	14ga	3"	4	5/16	280.4	0.162	254.9	0.148	8	4	51.82	12.58	
12x7	BCDU0712	12-13/16	8-1/8	7-1/16	10ga	14ga	3-3/8"	4	5/16	304.8	0.176	277.1	0.160	8	4	56.38	13.72	
12x7*	BCDU0712X	12-3/4	8	7-1/16	10ga	14ga	3-3/8"	4	5/16	304.8	0.176	277.1	0.160	8	4	56.38	13.72	
13x7	BCDU0713	13-13/16	8-1/8	7-1/16	10ga	14ga	3-5/8"	4	5/16	330.9	0.191	300.9	0.174	8	4	60.98	14.87	
14x7	BCDU0714	14-13/16	8-1/8	7-1/16	10ga	14ga	3"	5	5/16	357.0	0.207	324.6	0.188	8	4	65.58	16.02	
14x7*	BCDU0714X	14-3/4	8	7-1/16	10ga	14ga	3"	5	5/16	357.0	0.207	324.6	0.188	8	4	65.58	16.02	
15x7	BCDU0715	15-13/16	8-1/8	7-1/16	10ga	14ga	3-1/4"	5	5/16	458.9	0.266	417.2	0.241	8	4	70.14	17.16	
16x7	BCDU0716	16-13/16	8-1/8	7-1/16	10ga	14ga	2-7/8"; 3-1/2"	6; 5	5/16	409.3	0.237	372.1	0.215	8	4	74.70	18.30	
16x7*	BCDU0716X	16-3/4	8	7-1/16	10ga	14ga	2-7/8"; 3-1/2"	6; 5	5/16	409.3	0.237	372.1	0.215	8	4	74.70	18.30	
18x7	BCDU0718	18-11/16	8-1/8	7-1/16	10ga	14ga	3-1/8"	6	5/16	458.1	0.265	416.5	0.241	8	4	83.86	20.59	
20x7	BCDU0720	20-11/16	8-1/8	7-1/16	10ga	14ga	3-1/2"	6	5/16	509.5	0.295	463.2	0.268	8	4	93.02	22.88	
10x8	BCDU0810	10-11/16	9-1/8	8-15/16	10ga	14ga	4-1/8"	3	5/16	343.6	0.199	312.3	0.181	9	3	43.65	14.05	
11x8	BCDU0811	11-11/16	9-1/8	8-15/16	10ga	14ga	3"; 3-1/8"	4	5/16	378.1	0.219	343.7	0.199	9	3	47.88	15.46	
12x8	BCDU0812	12-13/16	9-1/8	8-15/16	10ga	14ga	3-3/8"	4	5/16	412.6	0.239	375.1	0.217	9	3	52.08	16.86	
12x8*	BCDU0812X	12-15/16	9-5/16	8-15/16	10ga	14ga	3-3/8"	4	5/16	412.6	0.239	375.1	0.217	9	3	52.08	16.86	
13x8	BCDU0813	13-11/16	9-1/8	8-15/16	10ga	14ga	3-5/8"	4	5/16	447.2	0.259	406.5	0.235	9	3	56.31	18.27	
13x8*	BCDU0813X	13-15/16	9-5/16	8-15/16	10ga	14ga	3-5/8"	4	5/16	447.2	0.259	406.5	0.235	9	3	56.31	18.27	
14x8	BCDU0814	14-13/16	9-1/8	8-15/16	10ga	14ga	3"	5	5/16	480.8	0.278	437.1	0.253	9	3	60.51	19.67	
14x8*	BCDU0814X	14-15/16	9-5/16	8-15/16	10ga	14ga	3"	5	5/16	480.8	0.278	437.2	0.253	9	3	60.51	19.67	
15x8	BCDU0815	15-11/16	9-1/8	8-15/16	10ga	14ga	3-1/4"	5	5/16	515.4	0.298	468.5	0.271	9	3	64.74	21.08	
16x8	BCDU0816	16-13/16	9-1/8	8-15/16	10ga	14ga	2-7/8"; 3-1/2"	6; 5	5/16	549.9	0.318	499.9	0.289	9	3	68.94	22.48	
16x8*	BCDU0816X	17-1/4	9-5/16	8-15/16	10ga	14ga	2-7/8"; 3-1/2"	6; 5	5/16	549.9	0.318	499.9	0.289	9	3	68.94	22.48	
18x8	BCDU0818	18-13/16	9-1/8	8-15/16	10ga	14ga	3-1/8"	6	5/16	618.1	0.358	561.9	0.325	9	3	77.37	25.29	
18x8*	BCDU0818X	19-1/4	9-5/16	8-15/16	10ga	14ga	3-1/8"	6	5/16	618.1	0.358	561.9	0.325	9	3	77.37	25.29	
20x8	BCDU0820	20-13/16	9-1/8	8-15/16	10ga	14ga	3-1/2"	6	5/16	687.2	0.398	624.7	0.362	9	3	85.83	28.11	
20x8*	BCDU0820X	21-1/4	9-5/16	8-15/16	10ga	14ga	3-1/2"	6	5/16	687.2	0.398	624.7	0.362	9	3	85.83	28.11	
22x8*	BCDU0822X	23-1/4	9-1/2	8-15/16	10ga	14ga	4"	6	5/16	757.0	0.438	688.2	0.398	9	3	93.96	30.82	
24x8*	BCDU0824X	25-1/4	9-1/2	8-15/16	10ga	14ga	3-1/2"	7	5/16	825.3	0.478	750.2	0.434	9	3	102.69	33.73	
16x9	BCDU0822	16-11/16	10-1/4	10-1/8	10ga	14ga	2-7/8"	6	5/16	711.6	0.412	646.9	0.374	10	3	36.00	11.50	
20x9	BCDU0824	20-11/16	10-1/4	10-1/8	10ga	14ga	3-1/2"	7	5/16	891.8	0.516	810.7	0.469	10	3	37.50	12.00	
16x10*	BCDU1016X	21-1/4	11-9/16	11-1/8	10ga	14ga	2-7/8"	6	5/16; 3/8	889.3	0.515	808.4	0.468	11	3	87.12	28.54	
18x10*	BCDU1018X	21-1/4	11-9/16	11-1/8	10ga	14ga	3-1/8"	6	5/16; 3/8	1001.3	0.579	910.2	0.527	11	3	97.83	32.11	
20x10*	BCDU1020X	21-1/4	11-9/16	11-1/8	10ga	14ga	3-1/2"	6	5/16; 3/8	1111.6	0.643	1010.5	0.585	11	3	108.54	35.68	

\* Some plastic bucket manufacturers offer a heavier version elevator bucket with the same nominal dimensions. Special consideration has been given to their larger actual dimensions.

- 1) All sizes can be manufactured in the low-profile design for closer spacing.
- 2) We can custom manufacture any digger to your specifications.

Need a distributor in your area? Please contact T.O.P.S. Inc. at 877-326-4704!!



2641 Metro Blvd. Maryland Heights, MO 63043  
(Phone) 636-326-4700 (Fax) 314-395-8671 (Online) www.topsinc.us