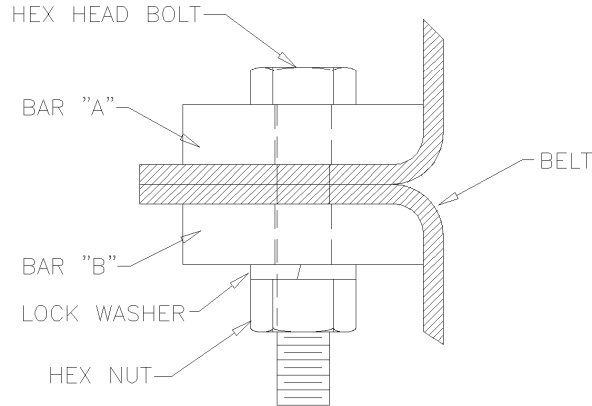


# INSTALLATION INSTRUCTIONS

## *TOPS Bar-It Clamp (NFM)*



1. Inspect both belt ends to be sure they are square; if not trim.
2. Take your *TOPS Bar-It Clamp* and take all hardware off. Once this is done it will leave you a natural template as these splices are made to your specific belt width.
3. Clamp splice to belt and mark centerline of holes with chalk, punch or wax pencil, then proceed by removing clamp.
4. Take both belt ends and clamp them together so they do not shift, then proceed to drill / punch for 1/2" bolts through both belt ends.
5. Visually inspect for proper hole placement; being sure everything is square.
6. Inspect *TOPS Bar-It Clamp* and you will notice each bar has a single beveled edge. This beveled edge faces the pulley per drawing above.
7. Once bars A & B are aligned use provided hardware and tighten. For a 600 PIW belt or less torque to 75 ft.lbs.
8. Visually inspect that everything is correct and install elevator belt.
9. Run elevator for 30 minutes then re-torque to above specifications.

**WARNING:** Not Approved for Manlifts!

T.O.P.S. Inc. strictly prohibits the use of the *TOPS Swift-Splice (FM)*, *TOPS Swift-Splice (NFM)* and *TOPS Bar-It (NFM)* on manlifts as these splices have not been approved or tested for this application. By installing, death or serious injury may occur.

**WARNING:** The *TOPS Swift-Splice (FM)*, *TOPS Swift-Splice (NFM)* and *TOPS Bar-It (NFM)* are not recommended for use in elevators with wing pulleys. By using them in this application you may notice premature wear on the back side of the belt around splice and / or noise in the boot section as the pulley may contact the splice.

**WARNING:** Do not re-use hardware. Please contact T.O.P.S. Inc. for replacement parts.

**WARNING:** Not for use on steel cable belts!

**Therm-O Plastic Suppliers, Inc.**

Phone: 636-326-4700 • Toll-free: 1-877-326-4704 • Fax: 314-395-8671  
website: [www.topsinc.us](http://www.topsinc.us) • e-mail: [tops@topsinc.us](mailto:tops@topsinc.us)

